



## ALEXANDER MOBILE CHANDELIER 46"

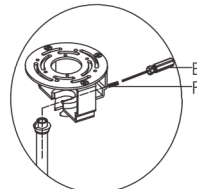
ASSEMBLY & INSTALLATION INSTRUCTIONS  
ENGLISH

## ALEXANDER MOBILE CHANDELIER 46" ENGLISH

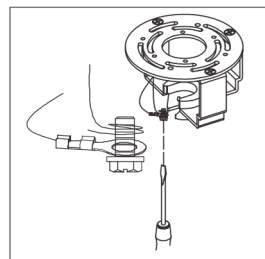
### ALEXANDER MOBILE CHANDELIER 46"

#### PARTS INCLUDED

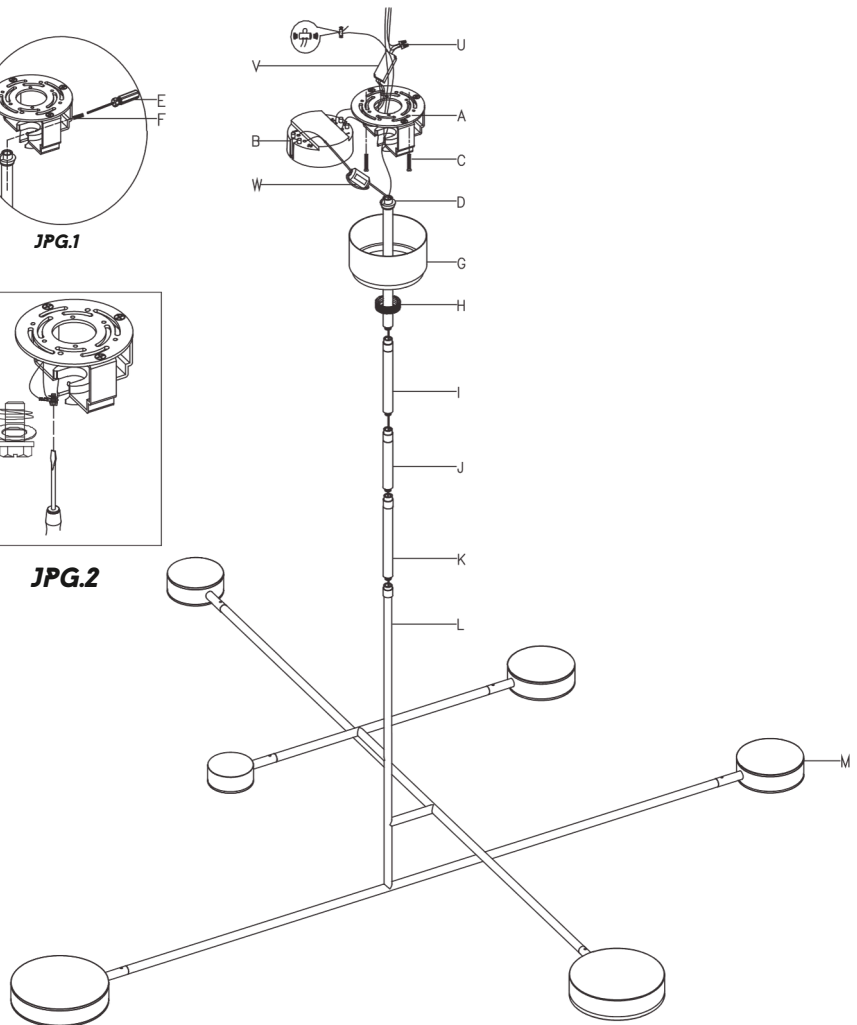
- (A) Mounting Plate (1)
- (B) Driver (1)
- (C) Mounting Screws (2)
- (D) Swivel Ball (1)
- (E) Hex Screwdriver (1)
- (F) Set Screw (1)
- (G) Canopy (1)
- (H) Collar Ring (1)
- (I) Top Rod (1)
- (J) Middle Rod (1)
- (K) Bottom Rod (1)
- (L) Fixture (1)
- (M) Shades (6)
- (U) Wire Nuts (2)
- (V) Filter (1)
- (W) Magnetic Ring (1)



**JPG.1**



**JPG.2**



#### TOOLS REQUIRED (IF APPLIABLE)

Slotted Screwdriver  
Wire Stripper  
Wire Cutter

#### IMPORTANT: PLEASE READ

PLEASE FOLLOW THE ASSEMBLY INSTRUCTIONS CLOSELY. IMPROPER ASSEMBLY OR INSTALLATION CAN RESULT IN PERSONAL OR PROPERTY DAMAGE. MOUNTING HARDWARE HAS BEEN PROVIDED FOR MOUNTING DIRECTLY TO A JUNCTION BOX. UNIQUE OR ALTERNATIVE INSTALLATION METHODS MAY REQUIRE DIFFERENT MOUNTING HARDWARE, WHICH HAS NOT BEEN INCLUDED. ALWAYS CONSULT WITH A LICENSED ELECTRICIAN BEFORE INSTALLATION.

INSTALLATION BY A LICENSED ELECTRICIAN IS STRONGLY RECOMMENDED.

#### IMPORTANT SAFETY FEATURES

##### BULBS

This fixture has been rated for up to twelve (12) 75-watt maximum LED panels. To avoid the risk of fire, do not exceed the recommended wattage.

##### VAULTED CEILING COMPATIBILITY

This fixture is vaulted-ceiling compatible, up to a maximum ceiling slope of 22.5 degrees.

##### DIMMER SWITCH COMPATIBILITY

This fixture is dimmer-switch compatible, and may only be used with TRIAC dimmer switch.

#### WARNINGS

All wires are connected. When unpacking, be careful not to pull wires, as damage may result. Do not connect electricity until the fixture is fully assembled. To reduce the risk of fire, electrical shock, or personal injury, always turn off fixture and allow it to cool prior to replacing the LED panels. Do not touch or look directly at the LED panels when fixture is illuminated. Keep flammable materials away from lit LED panels.

#### WARNING: STRANGULATION HAZARD

Keep cord at least 3 feet away from cribs, bassinets, and toddler beds. Keep out of reach of children under 3 years of age. THIS PRODUCT IS NOT A TOY AND HAS NO PLAY VALUE.



**WARNING:** This product can expose you to lead, which is known to the State of California to cause cancer and birth defects or other reproductive harm. For more information, go to [www.P65Warnings.ca.gov](http://www.P65Warnings.ca.gov).

#### ASSEMBLY AND INSTALLATION

#### SHUT OFF THE MAIN ELECTRICAL SUPPLY FROM THE FUSE BOX OR CIRCUIT BREAKER PANEL.

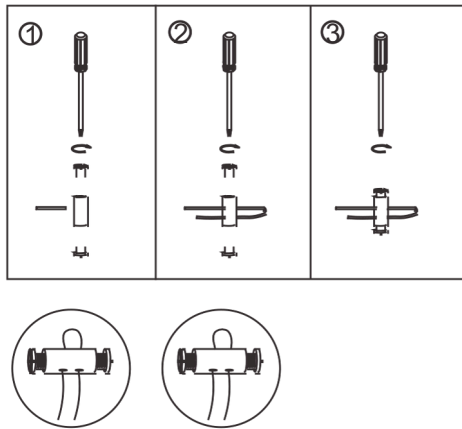
1. Carefully remove all parts from the box and remove all plastic coverings. Place on a clean, solid surface.
2. Remove Mounting Plate (A) from Canopy (G) by removing Collar Ring (H).
3. Install Mounting Plate (A) to the ceiling outlet box and secure with Mounting Screws (C).
4. Feed electrical wire through Bottom Rod (K), Middle Rod (J), and Top Rod (I). Thread all rods onto Fixture Body (L).
5. Feed wire through Collar Ring (H) and Canopy (G).
6. Hold Fixture Body (L) upright. Slide Collar Ring (H) and Canopy (G) down and rest on Fixture Body (L). NOTE: Slide components down slowly to avoid scratches.
7. Hang Swivel Ball (D) to the center of Mounting Plate (A) and secure with Set Screw (F) using Hex Screwdriver (E). See diagram JPG1 on the previous page.
8. Feed the fixture black cord through Magnetic Ring (W) and wrap it around.
9. Insert the red wire from the fixture into the "+" quick connector found on Driver (B).
10. Insert the black wire from fixture into the "-" quick connector found on Driver (B).
11. Connect the ground wire on fixture to the ground wire found on Filter (V) (usually green or bare copper), then tighten them onto Mounting Plate (A) using the green ground screw. See diagram JPG2 on the previous page.
12. Connect the input end of the hot wire (usually black) found on Filter (V) to the hot wire in-house and secure them together with a Wire Nut (U).
13. Connect the input end of the neutral wire (usually white) found on Filter (V) to the neutral wire in-house and secure them together with a Wire Nut (U). CAUTION: Do not reverse the hot and neutral connections.
14. Make sure all wires are tightly connected. Insert Filter (V) and room wires into the ceiling junction box and insert Driver (B) into the bracket of Mounting Plate (A).
15. Gather all wires together. Install Canopy (G) onto Mounting Plate (A) and secure the wire in place with Collar Ring (H).
16. Adjust Shades (M) to the desired angle. NOTE: The light source can be rotated.

#### CARE INSTRUCTIONS

Do not use polishes or cleaners on the fixture. Wipe clean with a soft dry cloth.

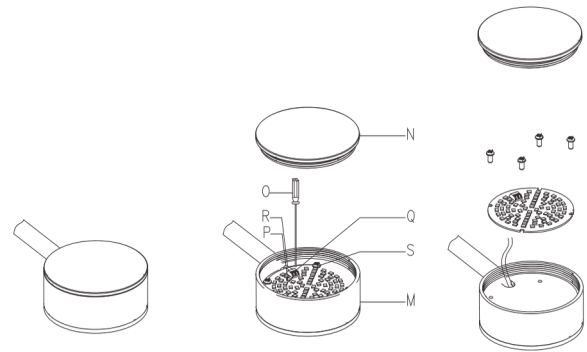
#### INSTALL SAFETY CABLE:

1. Run safety cable through junction box and around structural member of building.
2. Feed the end of the safety cable through the cable lock as shown in diagram below.
3. Insert screws into both holes on cable lock nut, secure screws with screwdriver.



#### LED COMPONENT REPLACEMENT STEPS

1. Turn off power at the fuse or circuit breaker.
2. Turn Lid (N) off of Shade (M).
3. Pull out Wire (R) by pressing Terminal (Q) on LED Module (P) with Sharp Tool (O) (not included).
4. Loosen Screw (S) in LED Module (P).
5. Take out LED Module (P).
6. Replace the new LED Module (P) into Shade (M). Secure with Screw (S).
7. Reconnect Wire (R) to Terminal (Q). Do not reverse the hot and neutral connections.
8. Replace Lid (N) onto Shade (M) and tighten.



FCC COMPLIANCE:

NOTE: This equipment has been tested and found to comply with the limits for a Class B digital device, pursuant to Part 15 of the FCC Rules. These limits are designed to provide reasonable protection against harmful interference in a residential installation. This equipment generates, uses, and can radiate radio frequency energy and, if not installed and used in accordance with the instructions, may cause harmful interference to radio communications. However, there is no guarantee that interference will not occur in a particular installation. If this equipment does cause harmful interference to radio or television reception, which can be determined by turning the equipment off and on, the user is encouraged to try to correct the interference by one or more of the following measures:

- Reorient or relocate the receiving antenna.
- Increase the separation between the equipment and receiver.
- Connect the equipment into an outlet on a circuit different from that to which the receiver is connected.
- Consult the dealer or an experienced radio/TV technician for help.

This device complies with Part 15 of the FCC Rules. Operation is subject to the following two conditions: (1) This device may not cause harmful interference, and (2) This device must accept any interference received, including interference that may cause undesired operation. Caution: Changes or modifications not expressly approved by the party responsible for compliance could void the user's authority to operate the equipment.

IC COMPLIANCE:

This Class B digital apparatus complies with CAN ICES-005 (B) / NMB-005(B).

RESTORATION HARDWARE

15 KOCH ROAD  
CORTE MADERA, CA 94925  
1-800-762-1005