



## ALEXANDER MOBILE LINEAR CHANDELIER 54"

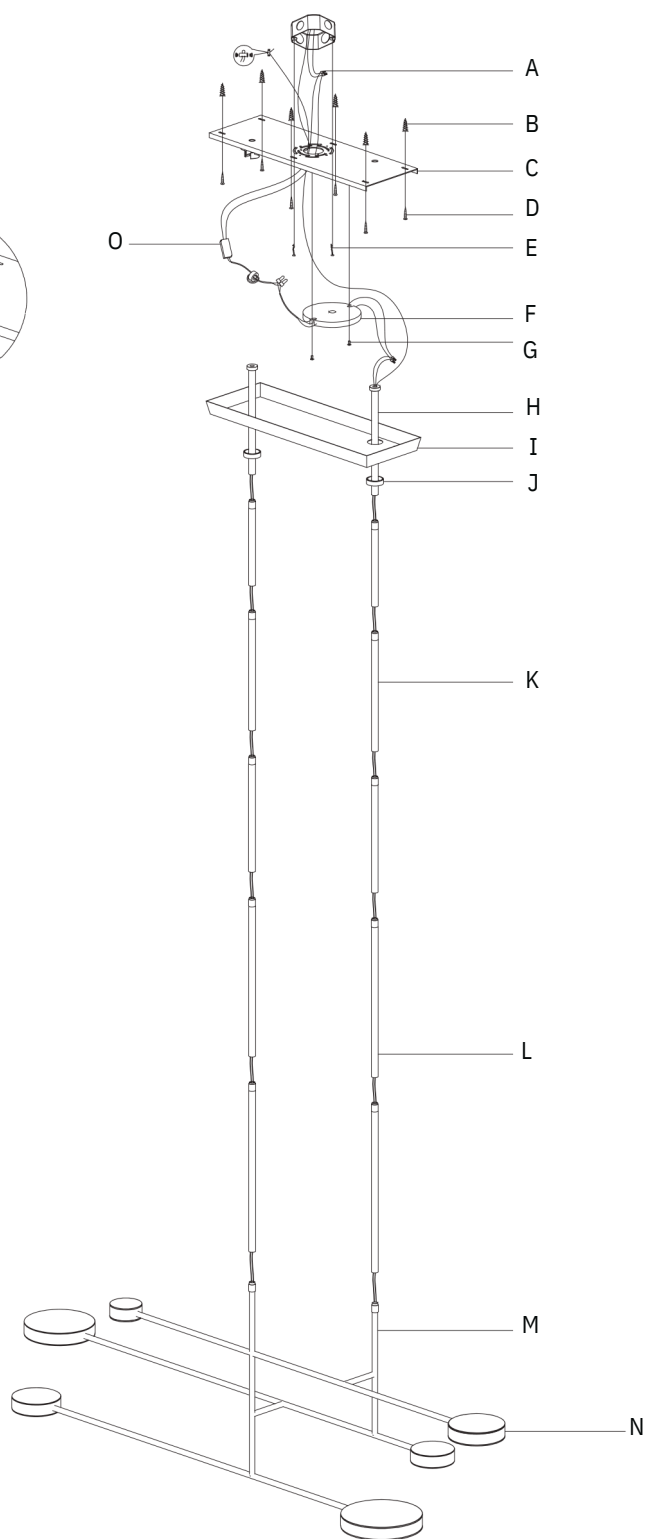
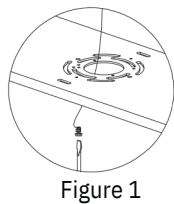
ASSEMBLY AND INSTALLATION INSTRUCTIONS  
ENGLISH

## ALEXANDER MOBILE LINEAR CHANDELIER 54" ENGLISH

### ALEXANDER MOBILE LINEAR CHANDELIER 54"

#### PARTS INCLUDED

- (A) Wire Nuts (4)
- (B) Anchors (6)
- (C) Mounting Plate (1)
- (D) Wood Screws (6)
- (E) Mounting Screws (2)
- (F) Driver (1)
- (G) Phillips Screws (2)
- (H) Top Rods (4)
- (I) Canopy (1)
- (J) Collar Rings (2)
- (K) Middle Rods (4)
- (L) Bottom Rods (4)
- (M) Fixture Body (1)
- (N) Shades (6)
- (O) Filter (1)



#### TOOLS NEEDED

- Power Drill (not included)
- Screwdriver (not included)

#### IMPORTANT: PLEASE READ

PLEASE FOLLOW THE ASSEMBLY INSTRUCTIONS CLOSELY. IMPROPER ASSEMBLY OR INSTALLATION CAN RESULT IN PERSONAL OR PROPERTY DAMAGE. MOUNTING HARDWARE HAS BEEN PROVIDED FOR MOUNTING DIRECTLY TO A JUNCTION BOX. UNIQUE OR ALTERNATIVE INSTALLATION METHODS MAY REQUIRE DIFFERENT MOUNTING HARDWARE, WHICH HAS NOT BEEN INCLUDED. ALWAYS CONSULT WITH A LICENSED ELECTRICIAN BEFORE INSTALLATION.

INSTALLATION BY A LICENSED ELECTRICIAN IS STRONGLY RECOMMENDED.

#### IMPORTANT SAFETY FEATURES

##### BULBS

This fixture has been rated for up to 12 (twelve) 4.6-watt maximum LED panels (included). To avoid the risk of fire, do not exceed the recommended wattage.

##### DIMMER SWITCH COMPATIBILITY

This fixture is dimmer-switch compatible, and may only be used with a forward-phase dimmer switch.

#### WARNINGS

All wires are connected. When unpacking, be careful not to pull wires, as damage may result. Do not connect electricity until the fixture is fully assembled. To reduce the risk of fire, electrical shock, or personal injury, always turn off the fixture and allow it to cool prior to replacing the LED. Do not touch or look directly at the LED when the fixture is illuminated. Keep flammable materials away from lit LED.



**WARNING:** This product can expose you to lead, which is known to the State of California to cause cancer and birth defects or other reproductive harm.

For more information, go to [www.P65Warnings.ca.gov](http://www.P65Warnings.ca.gov).

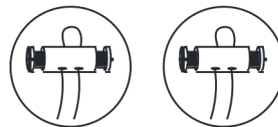
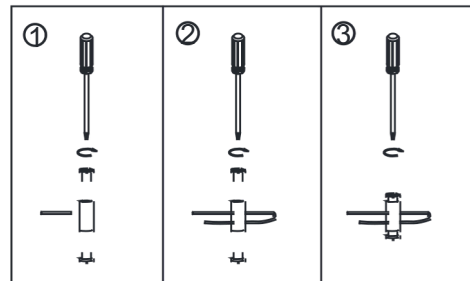
#### WARNING: STRANGULATION HAZARD

Keep cord at least 3 feet away from cribs, bassinets, and toddler beds. Keep out of reach of children under 3 years of age.

THIS PRODUCT IS NOT A TOY AND HAS NO PLAY VALUE.

#### SAFETY CABLE INSTALLATION

1. Run the safety cable through the junction box and around a structural member of the building.
2. Wrap both safety cables around the cable lock nut.
3. Insert screws into both holes on the cable lock nut, and secure screws with screwdriver.



ASSEMBLY AND INSTALLATION

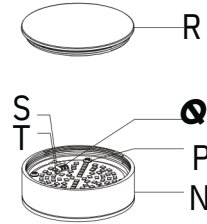
**SHUT OFF THE MAIN ELECTRICAL SUPPLY FROM  
THE FUSE BOX OR CIRCUIT BREAKER PANEL.**

1. Carefully remove all parts from the box and remove all plastic coverings. Place on a clean, soft surface.
2. Remove Mounting Plate (C) from Canopy (I) by removing Collar Rings (J).
3. Using the holes on Mounting Plate (C) as a guide, line it up with the ceiling and mark positions for Anchors (B).
4. Loosen Mounting Screws (E), then remove Mounting Plate (C). Drill holes in the positions you marked and install Anchors (B) into those holes.
5. Install Mounting Plate (C) into the ceiling junction box using Mounting Screws (E). Secure Mounting Plate (C) with Anchors (B) and Wood Screws (D).
6. Determine the desired hang length, and select the appropriate Rods (H, K, or L). Feed the fixture wire(s) through Collar Rings (J), Canopy (I), and the Rods (H, K, or L) that were selected.
7. Connect the black output wire from Driver (F) to the black wire from Fixture Body (M) with a Wire Nut (A).
8. Connect the red output wire from Driver (F) to the red wire from Fixture Body (M) with a Wire Nut (A).
9. Connect the white input wire from Filter (O) to the supply neutral wire with a Wire Nut (A).
10. Connect the black input wire from Filter (O) to the supply hot wire with a Wire Nut (A). CAUTION: Do not reverse the hot and neutral connections or safety will be compromised.
11. Connect the ground wires (usually green or bare copper), then tighten them by using the green ground screw. See Figure 1 on Page 2. NOTE: It is imperative that the fixture is properly grounded.
12. Make sure all the wire(s) are tightly connected. Place Driver (F) onto Mounting Plate (C) and secure with Phillips Screws (G).
13. Install Canopy (I) to Mounting Plate (C), and lock it in place with Collar Rings (J).
14. Adjust the angle of Shades (N). Note: Shades (N) can be rotated.
15. Installation is complete. Turn on power at the fuse or circuit breaker.

## ALEXANDER MOBILE LINEAR CHANDELIER 54" ENGLISH

### LED COMPONENT REPLACEMENT STEPS

- 1. TURN OFF THE POWER AT THE FUSE OR CIRCUIT BREAKER.**
  - 2. TWIST LID (R) OFF OF SHADE (N).**
  - 3. PULL OUT WIRE (S) BY PRESSING TERMINAL (Q) ON LED MODULE (T).**
  - 4. LOOSEN SCREW (P) AND TAKE OUT LED MODULE (T).**
  - 5. REPLACE THE NEW LED MODULE INTO SHADE (N). SECURE WITH SCREW (P). RECONNECT WIRE (S) TO TERMINAL (Q). DO NOT REVERSE THE HOT AND NEUTRAL CONNECTIONS OR SAFETY WILL BE COMPROMISED.**
- TIGHTEN LID (R) ONTO SHADE (N). INSTALLATION IS COMPLETE. TURN ON THE POWER AT THE FUSE OR CIRCUIT BREAKER.**



### CARE INSTRUCTIONS

Do not use polishes or cleaners on the fixture.  
Wipe clean with a soft, dry cloth.

## ALEXANDER MOBILE LINEAR CHANDELIER 54" ENGLISH

FCC COMPLIANCE: NOTE: This equipment has been tested and found to comply with the limits for a Class B digital device, pursuant to Part 15 of the FCC Rules. These limits are designed to provide reasonable protection against harmful interference in a residential installation. This equipment generates, uses, and can radiate radio frequency energy and, if not installed and used in accordance with the instructions, may cause harmful interference to radio communications. However, there is no guarantee that interference will not occur in a particular installation. If this equipment does cause harmful interference to radio or television reception, which can be determined by turning the equipment off and on, the user is encouraged to try to correct the interference by one or more of the following measures:

- Reorient or relocate the receiving antenna.
- Increase the separation between the equipment and receiver.
- Connect the equipment into an outlet on a circuit different from that to which the receiver is connected.
- Consult the dealer or an experienced radio/TV technician for help.

This device complies with Part 15 of the FCC Rules. Operation is subject to the following two conditions: (1) This device may not cause harmful interference, and (2) This device must accept any interference received, including interference that may cause undesired operation.

Caution: Changes or modifications not expressly approved by the party responsible for compliance could void the user's authority to operate the equipment.

### IC COMPLIANCE:

This Class B digital apparatus complies with CAN ICES-005 (B) /NMB-005(B).

RESTORATION HARDWARE  
15 KOCH ROAD  
CORTE MADERA, CA 94925  
1-800-762-1005



# ALEXANDER MOBILE LINEAR CHANDELIER 72"

ASSEMBLY AND INSTALLATION INSTRUCTIONS  
ENGLISH

ALEXANDER MOBILE LINEAR CHANDELIER 72"

PARTS INCLUDED

- (A) Wire Nuts (4)
- (B) Anchors (6)
- (C) Mounting Plate (1)
- (D) Wood Screws (6)
- (E) Mounting Screws (2)
- (F) Driver (1)
- (G) Phillips Screws (2)
- (H) Top Rods (4)
- (I) Canopy (1)
- (J) Collar Rings (2)
- (K) Middle Rods (4)
- (L) Bottom Rods (4)
- (M) Fixture Body (1)
- (N) Shades (6)
- (O) Filter (1)

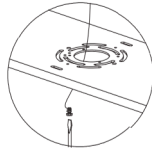
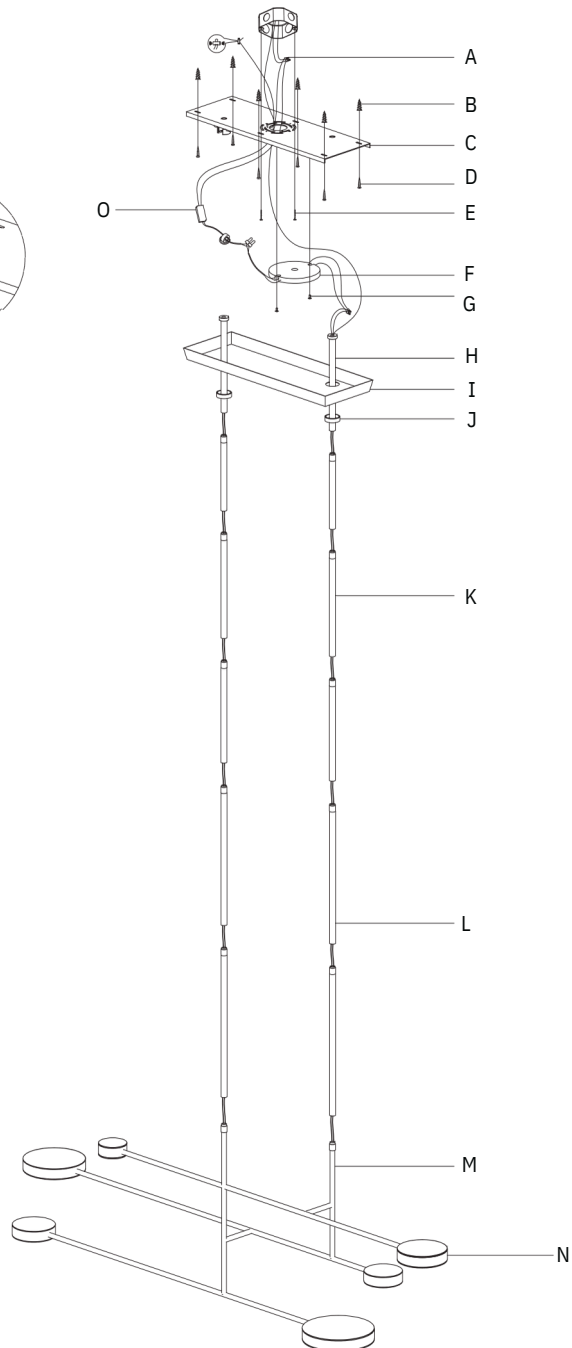


Figure 1



TOOLS NEEDED

- Power Drill (not included)
- Screwdriver (not included)



**IMPORTANT: PLEASE READ**

PLEASE FOLLOW THE ASSEMBLY INSTRUCTIONS CLOSELY. IMPROPER ASSEMBLY OR INSTALLATION CAN RESULT IN PERSONAL OR PROPERTY DAMAGE. MOUNTING HARDWARE HAS BEEN PROVIDED FOR MOUNTING DIRECTLY TO A JUNCTION BOX. UNIQUE OR ALTERNATIVE INSTALLATION METHODS MAY REQUIRE DIFFERENT MOUNTING HARDWARE, WHICH HAS NOT BEEN INCLUDED. ALWAYS CONSULT WITH A LICENSED ELECTRICIAN BEFORE INSTALLATION.

INSTALLATION BY A LICENSED ELECTRICIAN IS STRONGLY RECOMMENDED.

**IMPORTANT SAFETY FEATURES****BULBS**

This fixture has been rated for up to 12 (twelve) 6.3-watt maximum LED panels (included). To avoid the risk of fire, do not exceed the recommended wattage.

**DIMMER SWITCH COMPATIBILITY**

This fixture is dimmer-switch compatible, and may only be used with a forward-phase dimmer switch.

**WARNINGS**

All wires are connected. When unpacking, be careful not to pull wires, as damage may result. Do not connect electricity until the fixture is fully assembled. To reduce the risk of fire, electrical shock, or personal injury, always turn off the fixture and allow it to cool prior to replacing the LED. Do not touch or look directly at the LED when the fixture is illuminated. Keep flammable materials away from lit LED.



**WARNING:** This product can expose you to lead, which is known to the State of California to cause cancer and birth defects or other reproductive harm.

For more information, go to [www.P65Warnings.ca.gov](http://www.P65Warnings.ca.gov).

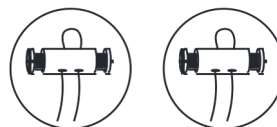
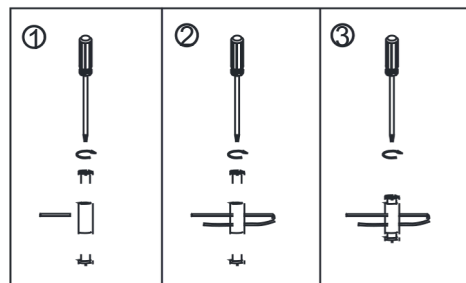
**WARNING: STRANGULATION HAZARD**

Keep cord at least 3 feet away from cribs, bassinets, and toddler beds. Keep out of reach of children under 3 years of age.

THIS PRODUCT IS NOT A TOY AND HAS NO PLAY VALUE.

**SAFETY CABLE INSTALLATION**

1. Run the safety cable through the junction box and around a structural member of the building.
2. Wrap both safety cables around the cable lock nut.
3. Insert screws into both holes on the cable lock nut, and secure screws with screwdriver.



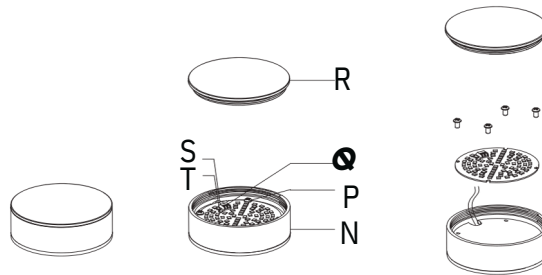
## ASSEMBLY AND INSTALLATION

**SHUT OFF THE MAIN ELECTRICAL SUPPLY FROM  
THE FUSE BOX OR CIRCUIT BREAKER PANEL.**

1. Carefully remove all parts from the box and remove all plastic coverings. Place on a clean, soft surface.
2. Remove Mounting Plate (C) from Canopy (I) by removing Collar Rings (J).
3. Using the holes on Mounting Plate (C) as a guide, line it up with the ceiling and mark positions for Anchors (B).
4. Loosen Mounting Screws (E), then remove Mounting Plate (C). Drill holes in the positions you marked and install Anchors (B) into those holes.
5. Install Mounting Plate (C) into the ceiling junction box using Mounting Screws (E). Secure Mounting Plate (C) with Anchors (B) and Wood Screws (D).
6. Determine the desired hang length and select the appropriate Rods (H, K, or L). Feed the fixture wire(s) through Collar Rings (J), Canopy (I), and the Rods (H, K, or L) that were selected.
7. Connect the black output wire from Driver (F) to the black wire from Fixture Body (M) with a Wire Nut (A).
8. Connect the red output wire from Driver (F) to the red wire from Fixture Body (M) with a Wire Nut (A).
9. Connect the white input wire from Filter (O) to the supply neutral wire with a Wire Nut (A).
10. Connect the black input wire from Filter (O) to the supply hot wire with a Wire Nut (A). CAUTION: Do not reverse the hot and neutral connections or safety will be compromised.
11. Connect the ground wires (usually green or bare copper), then tighten them by using the green ground screw. See Figure 1 on Page 2. NOTE: It is imperative that the fixture is properly grounded.
12. Make sure all the wire(s) are tightly connected. Place Driver (F) onto Mounting Plate (C) and secure with Phillips Screws (G).
13. Install Canopy (I) to Mounting Plate (C), and lock it in place with Collar Rings (J).
14. Adjust the angle of Shades (N). Note: Shades (N) can be rotated.
15. Installation is complete. Turn on power at the fuse or circuit breaker.

## LED COMPONENT REPLACEMENT STEPS

- 1. TURN OFF THE POWER AT THE FUSE OR CIRCUIT BREAKER.**
  - 2. TWIST LID (R) OFF SHADE (N).**
  - 3. PULL OUT WIRE (S) BY PRESSING TERMINAL (Q) ON LED MODULE (T).**
  - 4. LOOSEN SCREW (P) AND TAKE OUT LED MODULE (T).**
  - 5. REPLACE THE NEW LED MODULE INTO SHADE (N). SECURE WITH SCREW (P). RECONNECT WIRE (S) TO TERMINAL (Q). DO NOT REVERSE THE HOT AND NEUTRAL CONNECTIONS OR SAFETY WILL BE COMPROMISED.**
- TIGHTEN LID (R) ONTO SHADE (N). INSTALLATION IS COMPLETE. TURN ON THE POWER AT THE FUSE OR CIRCUIT BREAKER.**



## CARE INSTRUCTIONS

Do not use polishes or cleaners on the fixture.  
Wipe clean with a soft, dry cloth.

FCC COMPLIANCE: NOTE: This equipment has been tested and found to comply with the limits for a Class B digital device, pursuant to Part 15 of the FCC Rules. These limits are designed to provide reasonable protection against harmful interference in a residential installation. This equipment generates, uses, and can radiate radio frequency energy and, if not installed and used in accordance with the instructions, may cause harmful interference to radio communications. However, there is no guarantee that interference will not occur in a particular installation. If this equipment does cause harmful interference to radio or television reception, which can be determined by turning the equipment off and on, the user is encouraged to try to correct the interference by one or more of the following measures:

- Reorient or relocate the receiving antenna.
- Increase the separation between the equipment and receiver.
- Connect the equipment into an outlet on a circuit different from that to which the receiver is connected.
- Consult the dealer or an experienced radio/TV technician for help.

This device complies with Part 15 of the FCC Rules. Operation is subject to the following two conditions: (1) This device may not cause harmful interference, and (2) This device must accept any interference received, including interference that may cause undesired operation.

Caution: Changes or modifications not expressly approved by the party responsible for compliance could void the user's authority to operate the equipment.

#### IC COMPLIANCE:

This Class B digital apparatus complies with CAN ICES-005 (B) /NMB-005(B).

RESTORATION HARDWARE  
15 KOCH ROAD  
CORTE MADERA, CA 94925  
1-800-762-1005