



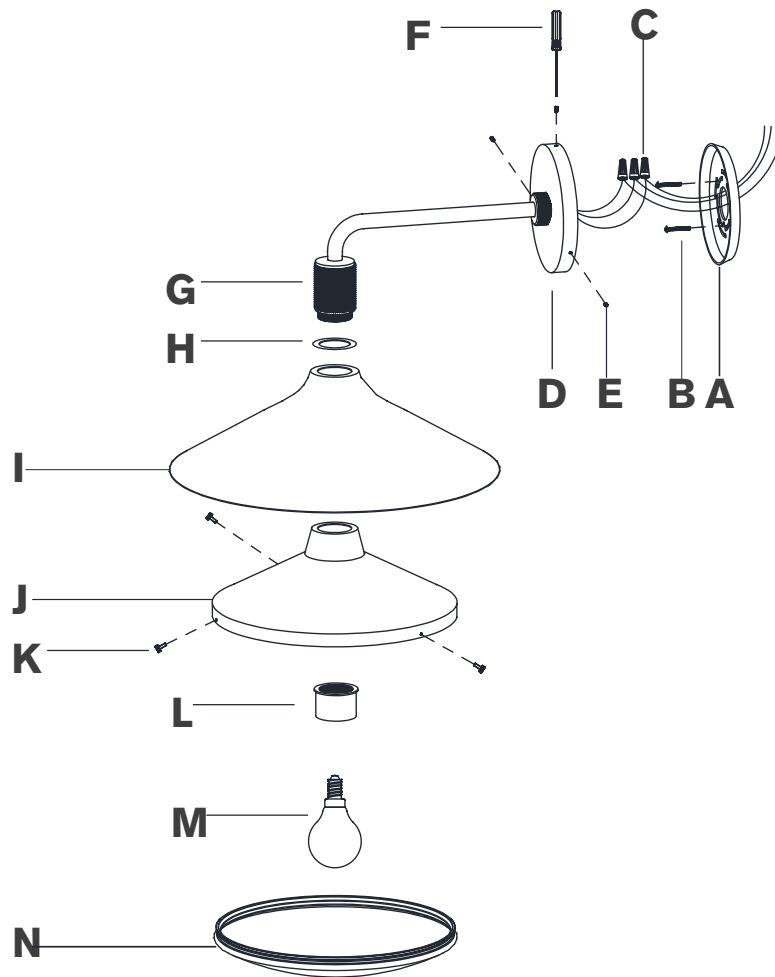
KENNAN TAPERED SCONCE 11"

ASSEMBLY AND INSTALLATION INSTRUCTIONS
ENGLISH

KENNAN TAPERED SCONCE 11"

PARTS INCLUDED

- (A) Mounting Plate (1)
- (B) Mounting Screws (2)
- (C) Wire Nuts (3)
- (D) Backplate (1)
- (E) Set Screws (3)
- (F) Screwdriver (1)
- (G) Socket (1)
- (H) Washer (1)
- (I) Shade (1)
- (J) Shade Holder (1)
- (K) Thumbscrews (3)
- (L) Socket Sleeve (1)
- (M) Bulb (1)
- (N) Glass Cover (1)



IMPORTANT: PLEASE READ

PLEASE FOLLOW THE ASSEMBLY INSTRUCTIONS CLOSELY. IMPROPER ASSEMBLY OR INSTALLATION CAN RESULT IN PERSONAL OR PROPERTY DAMAGE. MOUNTING HARDWARE HAS BEEN PROVIDED FOR MOUNTING DIRECTLY TO A JUNCTION BOX. UNIQUE OR ALTERNATIVE INSTALLATION METHODS MAY REQUIRE DIFFERENT MOUNTING HARDWARE, WHICH HAS NOT BEEN INCLUDED. ALWAYS CONSULT WITH A LICENSED ELECTRICIAN BEFORE INSTALLATION.

INSTALLATION BY A LICENSED ELECTRICIAN IS STRONGLY RECOMMENDED.

IMPORTANT SAFETY FEATURES

BULBS

This fixture has been rated for 1 (one) 60-watt maximum Type G incandescent lightbulb or 1 (one) 9-watt maximum LED lightbulb. To avoid the risk of fire, do not exceed the recommended wattage.

DIMMER SWITCH COMPATIBILITY

This fixture is dimmer-switch compatible, and may be used with either a forward-phase or reverse-phase dimmer switch.

WARNINGS

All wires are connected. When unpacking, be careful not to pull wires, as damage may result. Do not connect electricity until the fixture is fully assembled. To reduce the risk of fire, electrical shock, or personal injury, always turn off the fixture and allow it to cool prior to replacing the lightbulb. Do not touch or look directly at the bulb when the fixture is illuminated. Keep flammable materials away from lit bulb.



WARNING: This product can expose you to chemicals including lead, which is known to the State of California to cause cancer and birth defects or other reproductive harm.

For more information, go to www.P65Warnings.ca.gov.

WARNING: STRANGULATION HAZARD

Keep cord at least 3 feet away from cribs, bassinets, and toddler beds. Keep out of reach of children under 3 years of age.

THIS PRODUCT IS NOT A TOY AND HAS NO PLAY VALUE.

ASSEMBLY AND INSTALLATION

SHUT OFF THE MAIN ELECTRICAL SUPPLY FROM THE FUSE BOX OR CIRCUIT BREAKER PANEL.

1. Carefully remove all parts from the box. Place on a clean, soft surface.
2. Remove Mounting Plate (A) from Backplate (D) by removing Set Screws (E) using Screwdriver (F).
3. Install Mounting Plate (A) to the wall junction box and secure with Mounting Screws (B).
4. Gently pull the wires from the wall junction box and allow the wires to hang. Thread the wires through the center hole of Mounting Plate (A).
5. Wrap the fixture ground wire (green or green/yellow) around the green grounding screw and tighten. Continue feeding the fixture ground wire and connect it to the supply ground wire (usually green or bare copper) using a Wire Nut (C). NOTE: It is imperative that the fixture is properly grounded.
6. Connect the fixture neutral wire (white) to the supply neutral wire (usually white) using a Wire Nut (C).
7. Connect the fixture hot wire (black) to the supply hot wire (usually black) using a Wire Nut (C). CAUTION: Do not reverse the hot and neutral connections or safety will be compromised.
8. Make sure all wire connections are tight, then carefully tuck into the wall junction box.
9. Install Backplate (D) to Mounting Plate (A), and secure with Set Screws (E) using Screwdriver (F).
10. Remove Socket Sleeve (L) and Washer (H) from Socket (G). Install Washer (H), Shade (I), and Shade Holder (J) to Socket (G) and secure with Socket Sleeve (L).
11. Install Bulb (M) into Socket (G).
12. Loosen Thumbscrews (K). Install Glass Cover (N) to Shade Holder (J) and secure with Thumbscrews (K). NOTE: Do not overtighten, otherwise, glass could become damaged.
13. Installation is complete. Turn on power at the fuse or circuit breaker.
14. Assembly is complete.

CARE INSTRUCTIONS

Do not use polishes or cleaners on the fixture.

Wipe clean with a soft, dry cloth.



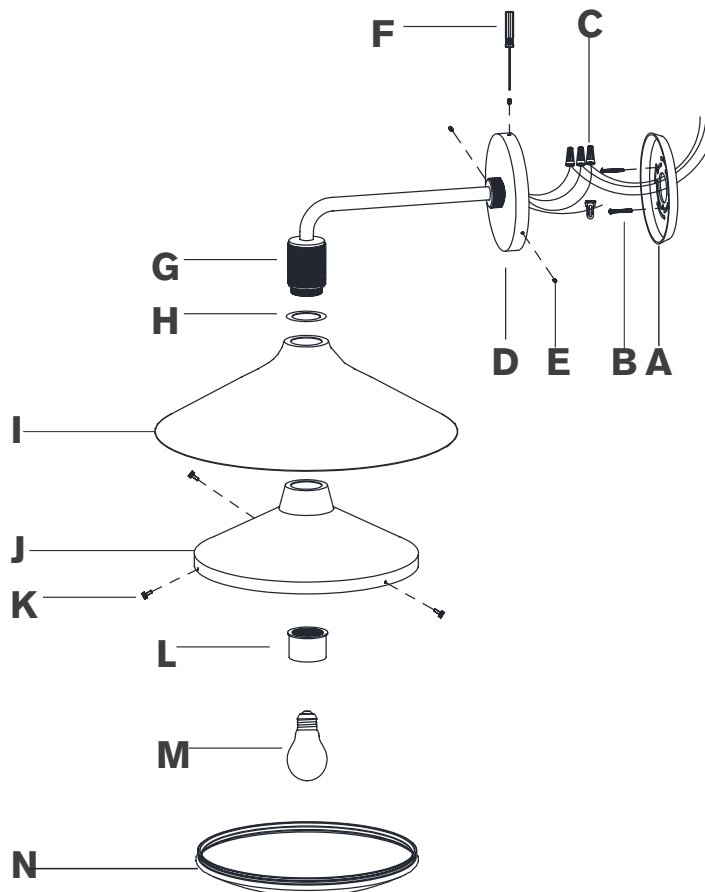
KENNAN TAPERED SCONCE 14", 18"

ASSEMBLY AND INSTALLATION INSTRUCTIONS
ENGLISH

KENNAN TAPERED SCONCE 14", 18"

PARTS INCLUDED

- (A) Mounting Plate (1)
- (B) Mounting Screws (2)
- (C) Wire Nuts (3)
- (D) Backplate (1)
- (E) Set Screws (3)
- (F) Screwdriver (1)
- (G) Socket (1)
- (H) Washer (1)
- (I) Shade (1)
- (J) Shade Holder (1)
- (K) Thumbscrews (3)
- (L) Socket Sleeve (1)
- (M) Bulb (1)
- (N) Glass Cover (1)



IMPORTANT: PLEASE READ

PLEASE FOLLOW THE ASSEMBLY INSTRUCTIONS CLOSELY. IMPROPER ASSEMBLY OR INSTALLATION CAN RESULT IN PERSONAL OR PROPERTY DAMAGE. MOUNTING HARDWARE HAS BEEN PROVIDED FOR MOUNTING DIRECTLY TO A JUNCTION BOX. UNIQUE OR ALTERNATIVE INSTALLATION METHODS MAY REQUIRE DIFFERENT MOUNTING HARDWARE, WHICH HAS NOT BEEN INCLUDED. ALWAYS CONSULT WITH A LICENSED ELECTRICIAN BEFORE INSTALLATION.

INSTALLATION BY A LICENSED ELECTRICIAN IS STRONGLY RECOMMENDED.

IMPORTANT SAFETY FEATURES

BULBS

This fixture has been rated for 1 (one) 60-watt maximum Type A incandescent lightbulb or 1 (one) 9-watt maximum LED lightbulb. To avoid the risk of fire, do not exceed the recommended wattage.

DIMMER SWITCH COMPATIBILITY

This fixture is dimmer-switch compatible, and may be used with either a forward-phase or reverse-phase dimmer switch.

WARNINGS

All wires are connected. When unpacking, be careful not to pull wires, as damage may result. Do not connect electricity until the fixture is fully assembled. To reduce the risk of fire, electrical shock, or personal injury, always turn off the fixture and allow it to cool prior to replacing the lightbulb. Do not touch or look directly at the bulb when the fixture is illuminated. Keep flammable materials away from lit bulb.



WARNING: This product can expose you to chemicals including lead, which is known to the State of California to cause cancer and birth defects or other reproductive harm.

For more information, go to www.P65Warnings.ca.gov.

WARNING: STRANGULATION HAZARD

Keep cord at least 3 feet away from cribs, bassinets, and toddler beds. Keep out of reach of children under 3 years of age.

THIS PRODUCT IS NOT A TOY AND HAS NO PLAY VALUE.

ASSEMBLY AND INSTALLATION

SHUT OFF THE MAIN ELECTRICAL SUPPLY FROM THE FUSE BOX OR CIRCUIT BREAKER PANEL.

1. Carefully remove all parts from the box. Place on a clean, soft surface.
2. Remove Mounting Plate (A) from Backplate (D) by removing Set Screws (E) using Screwdriver (F).
3. Install Mounting Plate (A) to the wall junction box and secure with Mounting Screws (B).
4. Gently pull the wires from the wall junction box and allow the wires to hang. Thread the wires through the center hole of Mounting Plate (A).
5. Wrap the fixture ground wire (green or green/yellow) around the green grounding screw and tighten. Continue feeding the fixture ground wire and connect it to the supply ground wire (usually green or bare copper) using a Wire Nut (C). NOTE: It is imperative that the fixture is properly grounded.
6. Connect the fixture neutral wire (white) to the supply neutral wire (usually white) using a Wire Nut (C).
7. Connect the fixture hot wire (black) to the supply hot wire (usually black) using a Wire Nut (C). CAUTION: Do not reverse the hot and neutral connections or safety will be compromised.
8. Make sure all wire connections are tight, then carefully tuck into the wall junction box.
9. Install Backplate (D) to Mounting Plate (A), and secure with Set Screws (E) using Screwdriver (F).
10. Remove Socket Sleeve (L) and Washer (H) from Socket (G). Install Washer (H), Shade (I), and Shade Holder (J) to Socket (G) and secure with Socket Sleeve (L).
11. Install Bulb (M) into Socket (G).
12. Loosen Thumbscrews (K). Install Glass Cover (N) to Shade Holder (J) and secure with Thumbscrews (K). NOTE: Do not overtighten, otherwise, glass could become damaged.
13. Installation is complete. Turn on power at the fuse or circuit breaker.
14. Assembly is complete.

CARE INSTRUCTIONS

Do not use polishes or cleaners on the fixture.

Wipe clean with a soft, dry cloth.